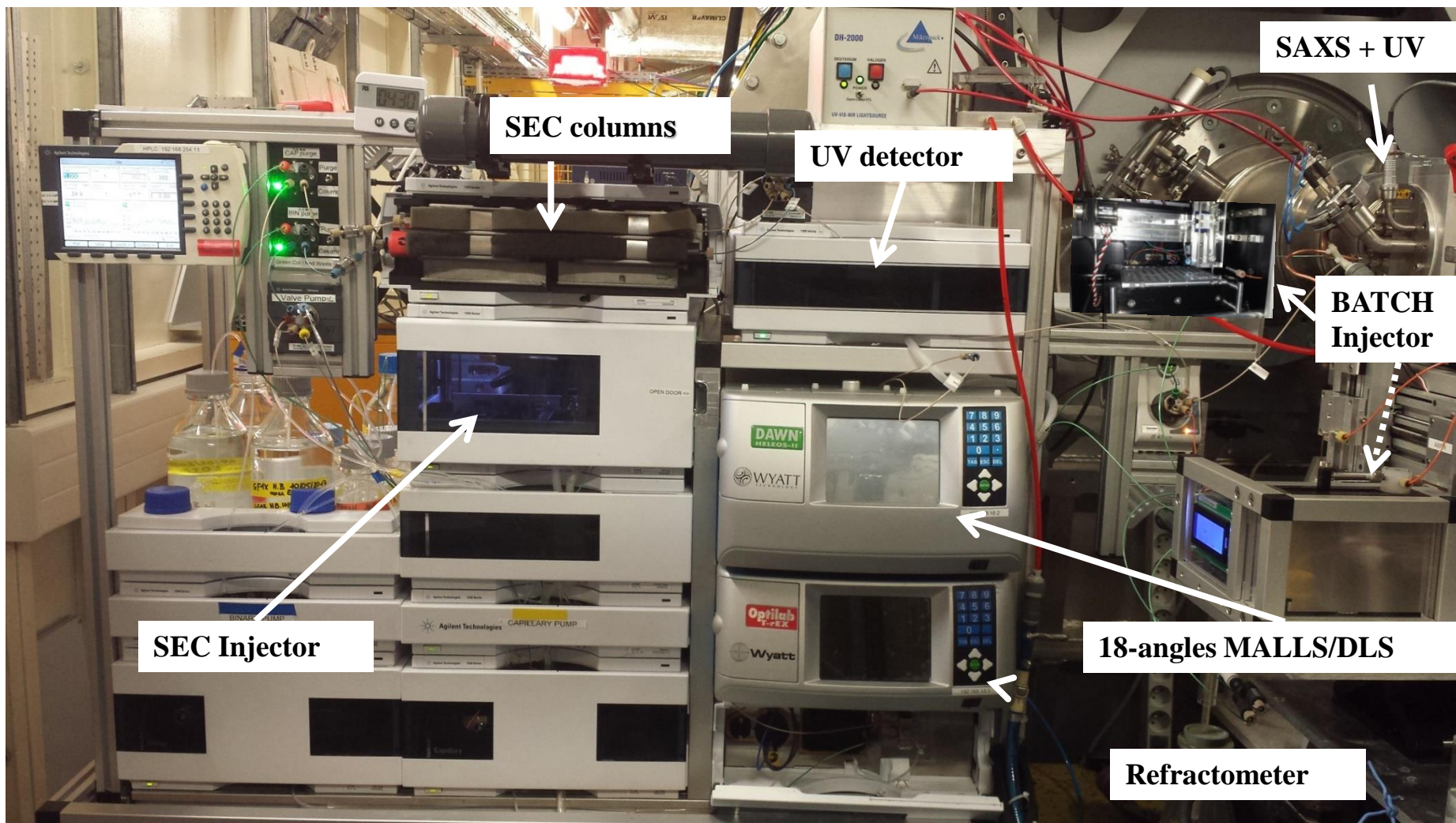
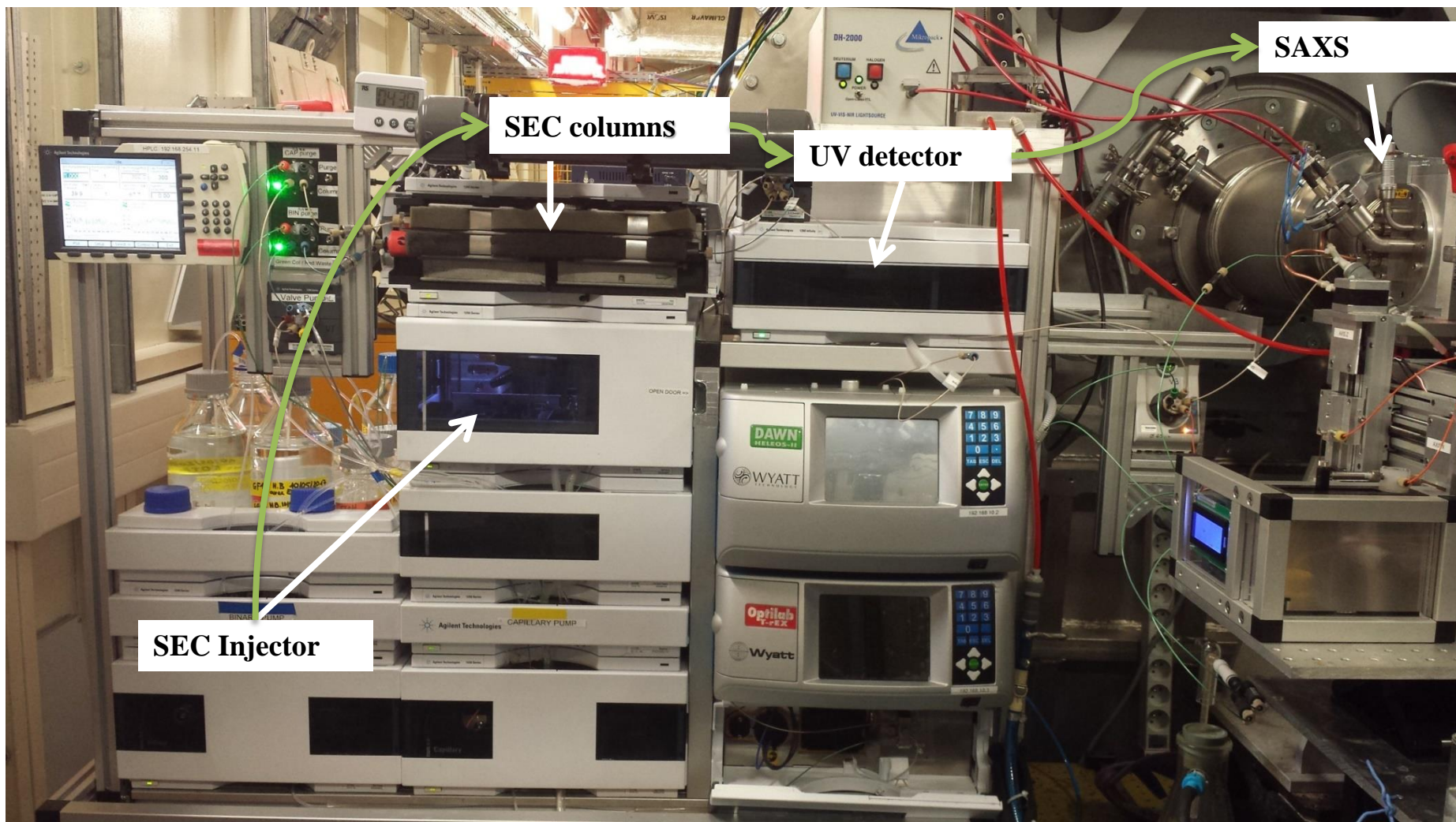




# SEC-SAXS: Practical aspects

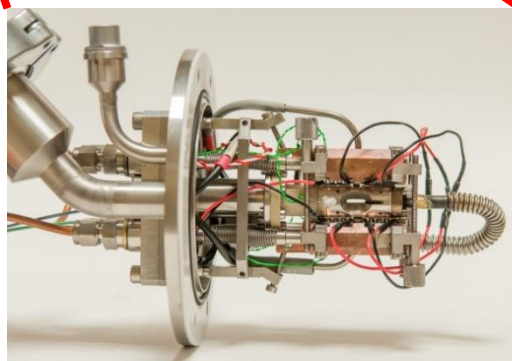
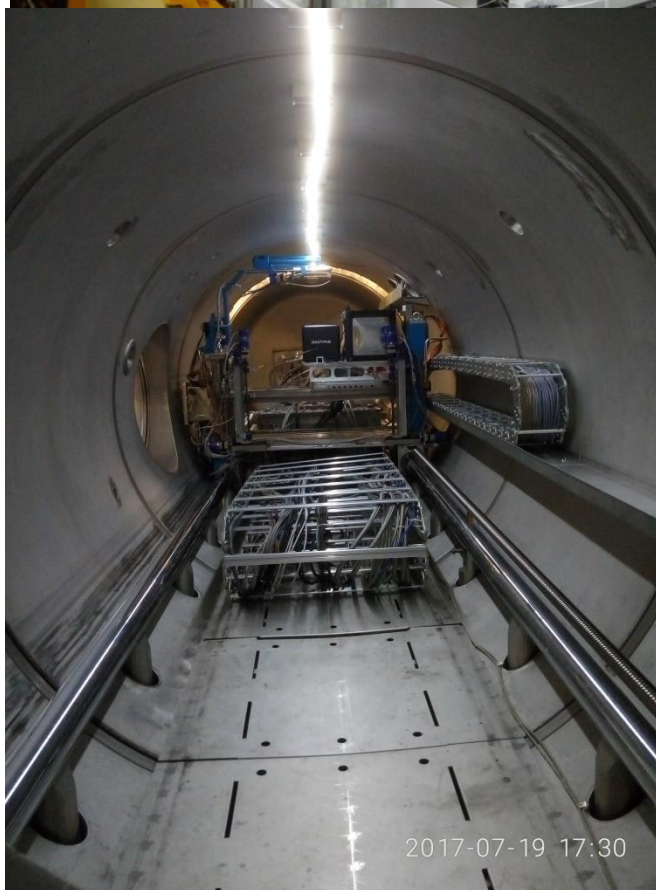
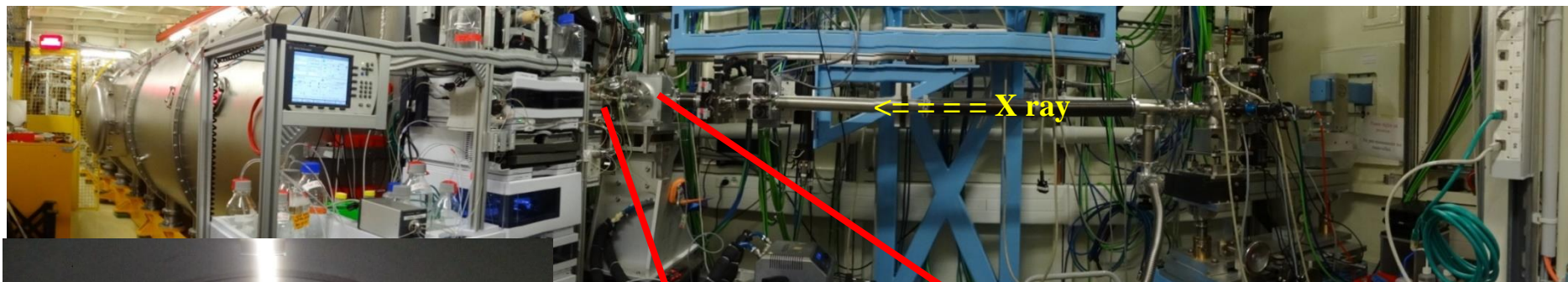








# SEC-SAXS on Swing Beamline



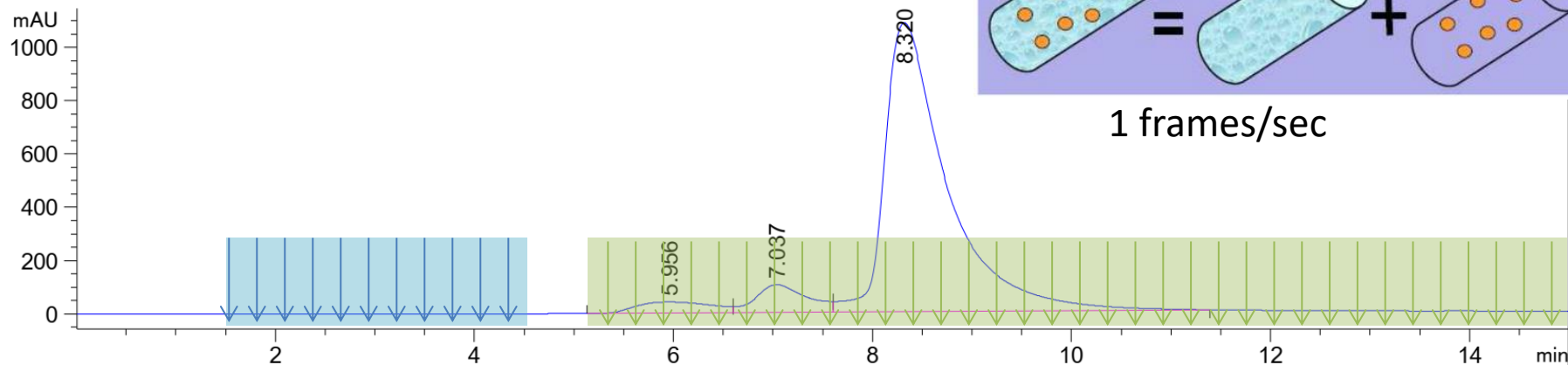


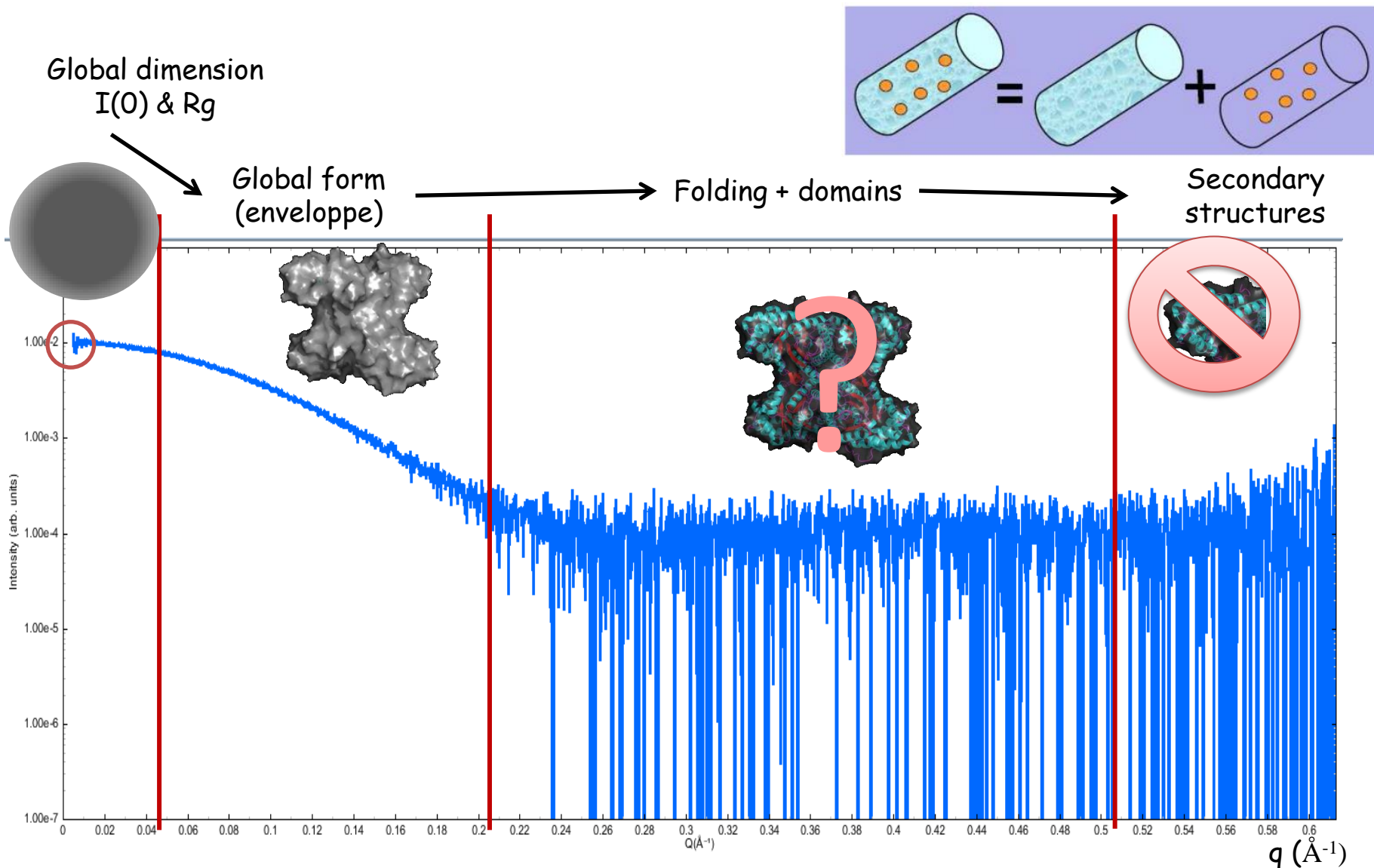


# SEC-SAXS on Swing Beamline



DAD1 A, Sig=280,4 Ref=636,4 (RUN\_0000002.D)



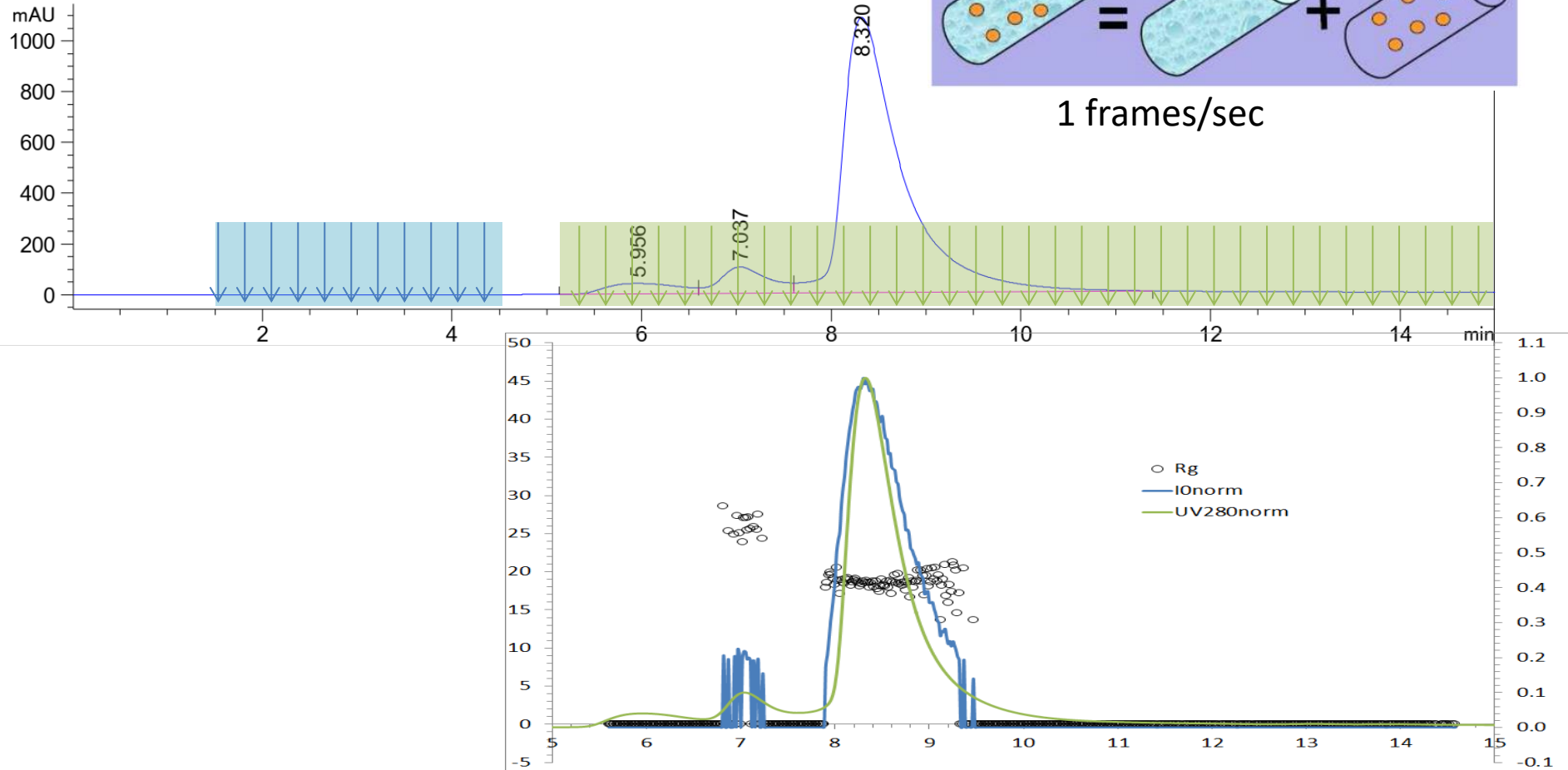




# SEC-SAXS on Swing Beamline



DAD1 A, Sig=280,4 Ref=636,4 (RUN\_0000002.D)





# SEC-SAXS on Swing Beamline

