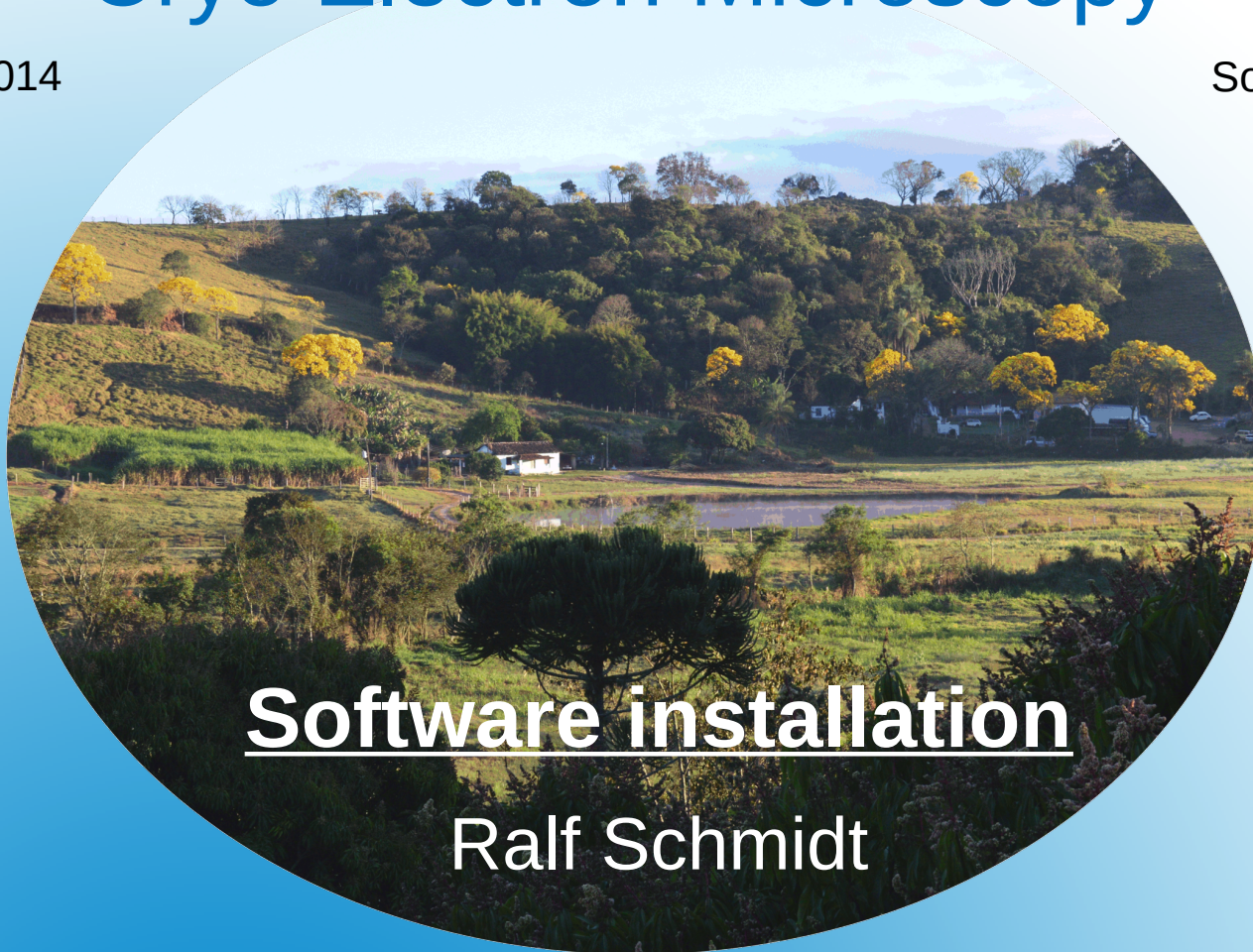


The Sixth Brazil School for Single Particle Cryo Electron Microscopy

14-26 August 2014

Socorro, São Paulo
Brazil



Software installation

Ralf Schmidt

© Image Science Software GmbH

6th Brazil School 2014

Software installation for MS Windows

- OpenMPI
- Java
- IMAGIC

Software volume

- Windows 7

Mount the software volume by clicking the **Start** button, and then clicking **Computer**

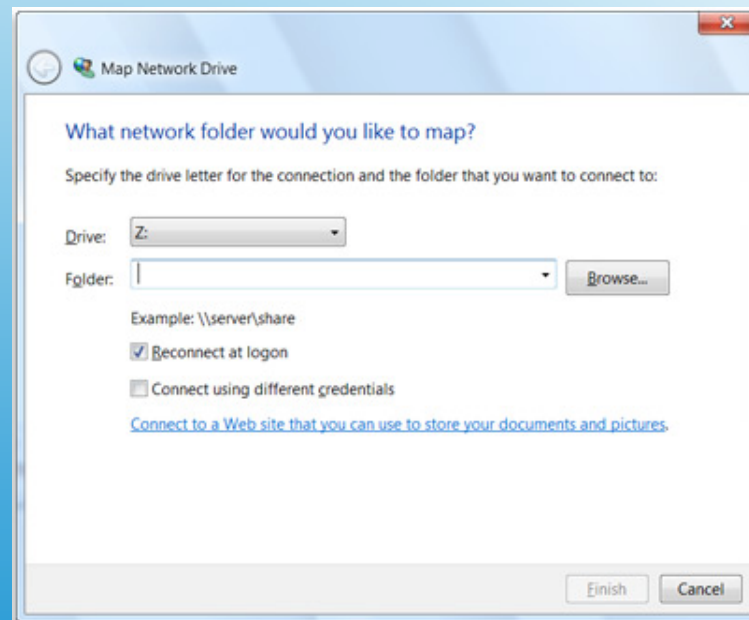
- Windows 8.1

Click the **Search** field (or press the key combination [Win-Logo]+[R]) and enter **Computer**.

In the result list, click the **Computer** icon

Map network drive

- Click **Map network drive**



Map network drive

- In the drive list, select a drive letter
- In the folder box add the drive name
`\\ImScWDMMyCloud\school`
- Click **Finish**
- When prompted, enter the username **brazil**
and the password **school**

Select installation files

- Browse the Software folder on the network drive and select the Imagic directory
- Depending on your computer architecture, select either the Windows32 or Windows64 directory

Note: To find out if your computer is running a 32-bit or 64-bit version of Windows, do the following:

Open **System** by clicking the **Start** button, right-clicking **Computer**, and then clicking **Properties**

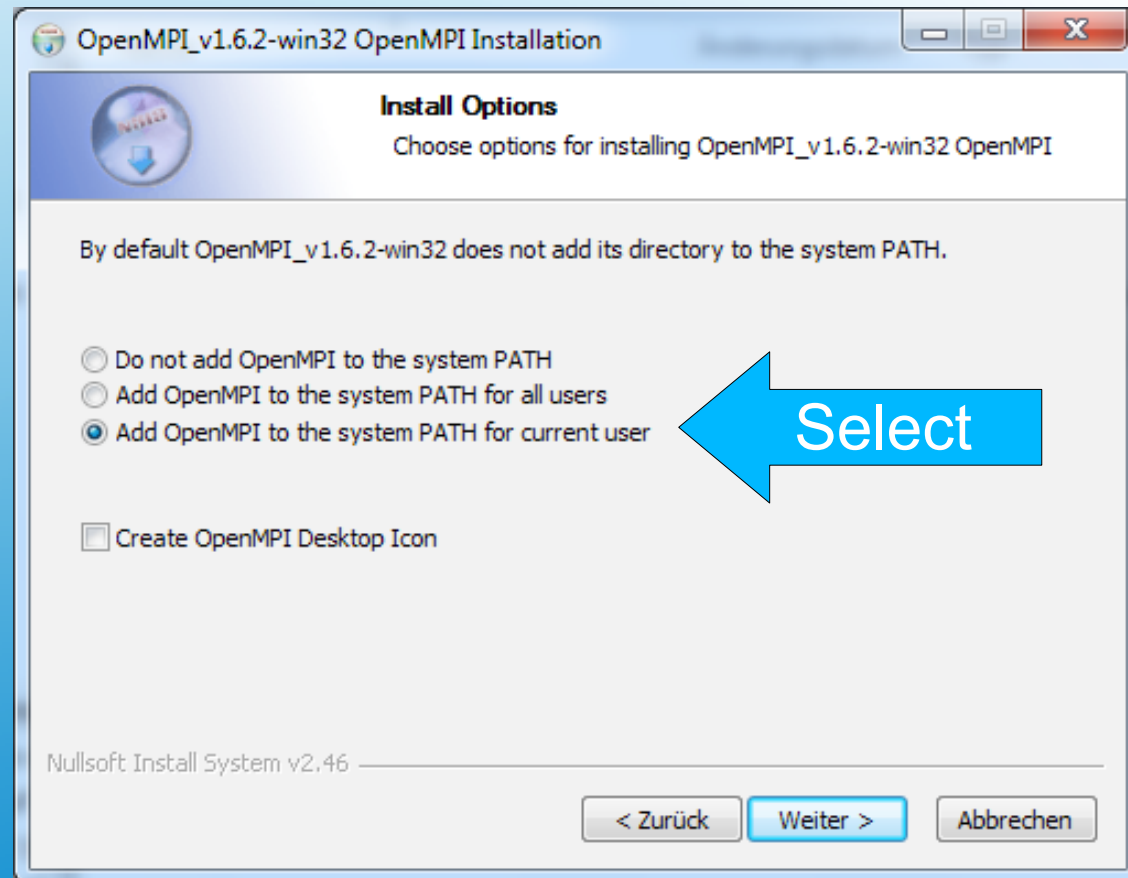
Under System, you can view the system type

OpenMPI installation

- Double-click the file OpenMPI_<...>.exe
- Follow the graphical user interface and change the marked entries

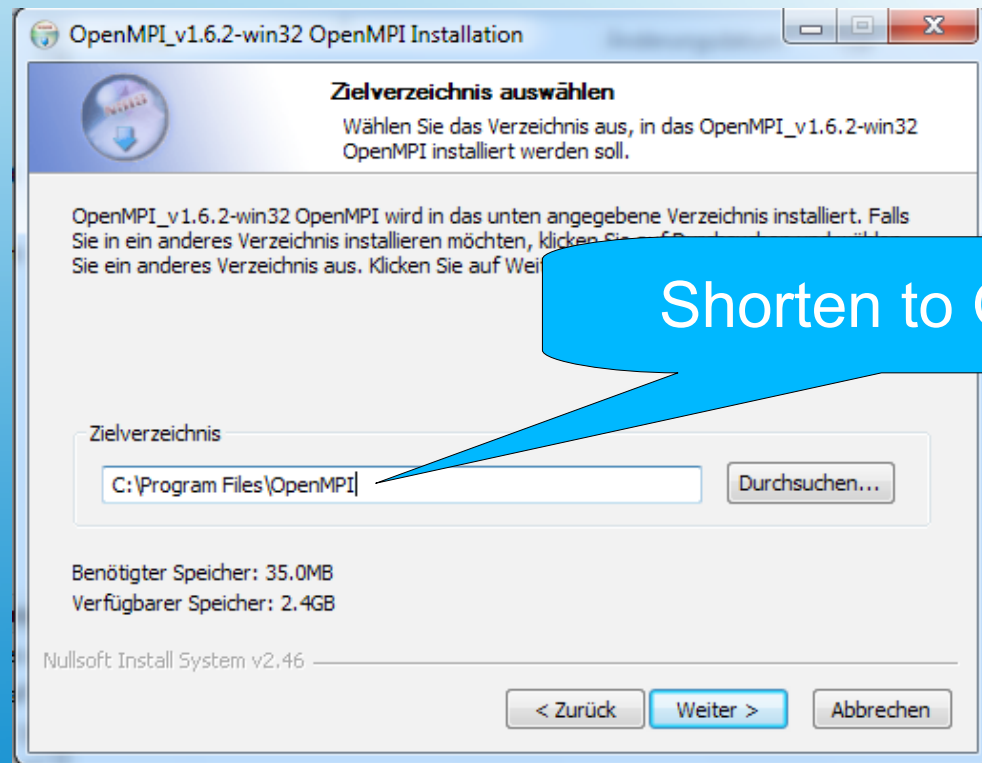
Add OpenMPI to system PATH

- Add OpenMPI to the system PATH



OpenMPI installation folder

- Shorten the suggested directory name to OpenMPI



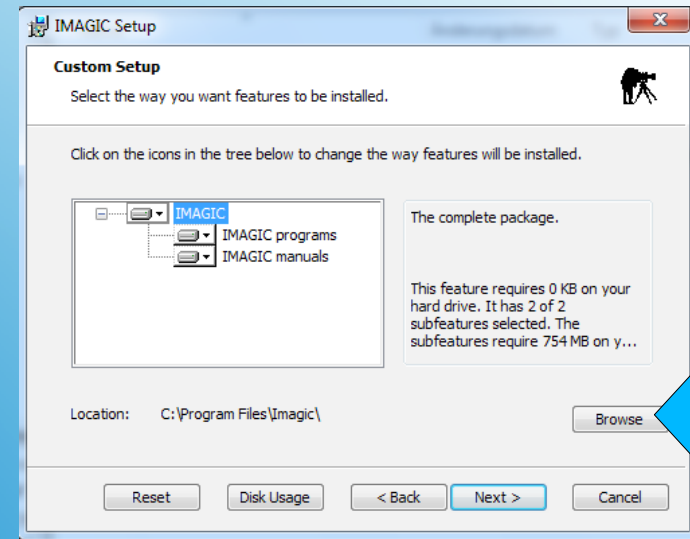
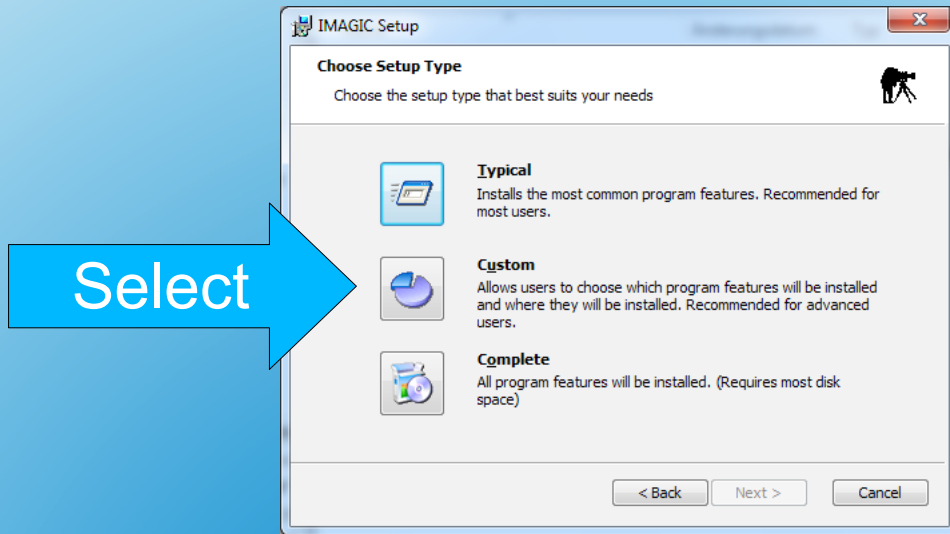
Shorten to OpenMPI

Java installation

- Double-click the file jre-<...>.exe
- Follow the graphical user interface and use all the defaults for the installation

IMAGIC installation

- Double-click the file imagic_win_<...>.msi
- Select „Custom“ installation
- Change the installation path to **C:\imagic**



Work with IMAGIC

- Windows 7

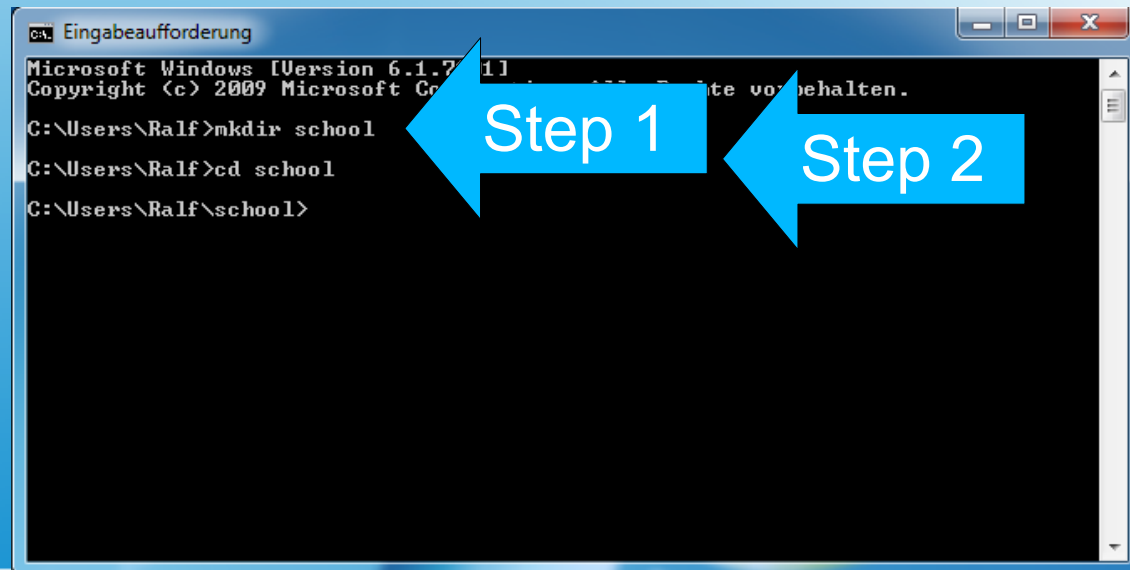
Open the **Command Prompt** window by clicking the **Start** button and enter **cmd** in the text field. Click the highlighted **cmd** icon

- Windows 8.1

Click the **Search** field (or press the key combination [Win-Logo]+[R]) and enter **cmd**. In the result list, click the **cmd** icon

Work with IMAGIC

- In the Command Prompt window create a working directory, e.g. **school**
- Change to the newly created working directory



The screenshot shows a Windows Command Prompt window titled 'Eingabeaufforderung'. The text inside the window is as follows:

```
Microsoft Windows [Version 6.1.7601.17514]
Copyright (c) 2009 Microsoft Corporation. Alle Rechte vorbehalten.

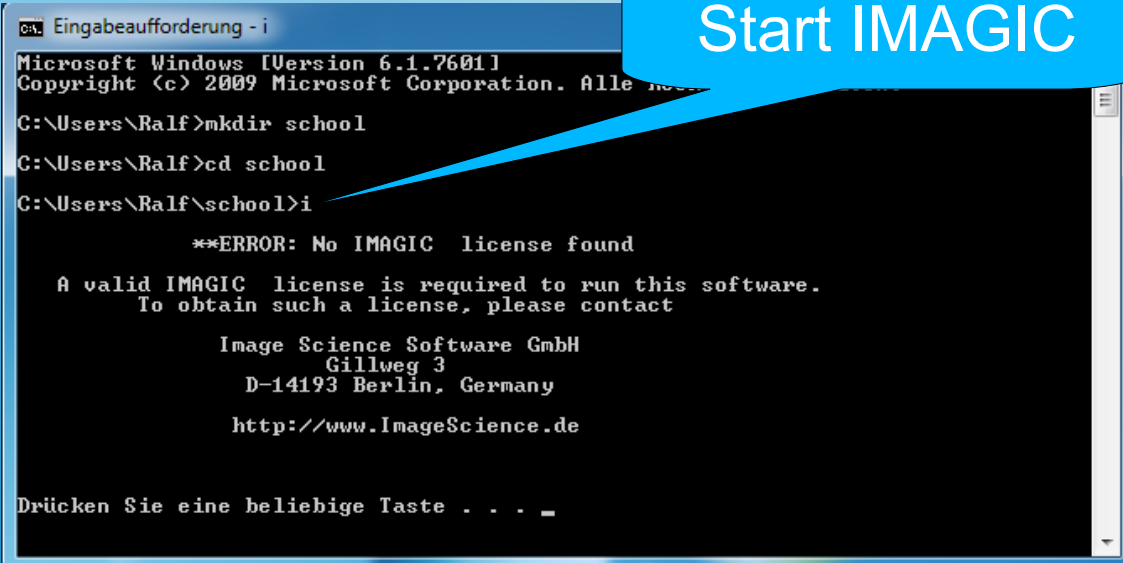
C:\Users\Ralf>mkdir school
C:\Users\Ralf>cd school
C:\Users\Ralf\school>
```

Two blue arrows with white text are overlaid on the screenshot. The first arrow, labeled 'Step 1', points to the command 'mkdir school'. The second arrow, labeled 'Step 2', points to the command 'cd school'.

Work with IMAGIC

- Start IMAGIC by entering „i“ or „imagic“

Note: The first time you start IMAGIC, the system complains about a missing IMAGIC license file



The screenshot shows a Windows command prompt window titled "Eingabeaufforderung - i". The user has navigated to the directory C:\Users\Ralf\school and entered the command "i". The output displays an error message: "**ERROR: No IMAGIC license found". It states that a valid IMAGIC license is required to run the software and provides contact information for Image Science Software GmbH, including their address in Berlin, Germany, and their website URL: http://www.ImageScience.de. A blue callout bubble with the text "Start IMAGIC" points to the command prompt window.

```
Microsoft Windows [Version 6.1.7601]
Copyright (c) 2009 Microsoft Corporation. Alle Rechte vorbehalten.

C:\Users\Ralf>mkdir school
C:\Users\Ralf>cd school
C:\Users\Ralf\school>i

**ERROR: No IMAGIC license found

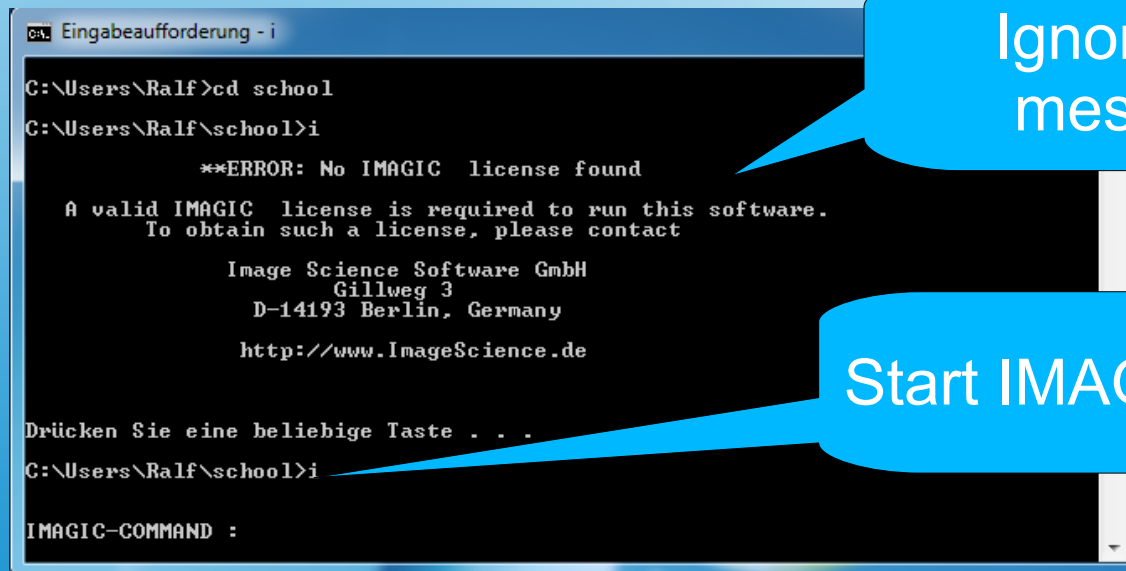
A valid IMAGIC license is required to run this software.
To obtain such a license, please contact

Image Science Software GmbH
Gillweg 3
D-14193 Berlin, Germany
http://www.ImageScience.de

Drücken Sie eine beliebige Taste . . .
```


Work with IMAGIC

- Ignore the „No IMAGIC license“ message. You will not see it again
- Start IMAGIC by entering „i“ or „imagic“



```
CA\ Eingabeaufforderung - i
C:\Users\Ralf>cd school
C:\Users\Ralf\school>i

**ERROR: No IMAGIC license found
A valid IMAGIC license is required to run this software.
To obtain such a license, please contact
Image Science Software GmbH
Gillweg 3
D-14193 Berlin, Germany
http://www.ImageScience.de

Drücken Sie eine beliebige Taste . . .
C:\Users\Ralf\school>i
IMAGIC-COMMAND :
```

Ignore this message

Start IMAGIC again

Success

- You now have successfully installed the necessary software to work with IMAGIC
- Enjoy the 6th Brazil School for Single Particle Cryo-EM

